



Scholarships

GIPSFUNDATION



Kneale Administration Building
123 South Webb Road
Grand Island, NE 68803
(308) 385-5900 • gipsfoundation.org

Scholarship Process Overview for Reviewers

One Application for 170 Scholarships

We have meticulously designed an online application process that allows students to complete one application for up to 170 different scholarships. This application represents approximately **\$460,000** in total scholarships. Scholarships range from \$250-\$220,000 each.

219 Total Submitted Applications

(155 GISH, 63 Non-GISH, 1 in College)

Applications from: Grand Island Senior High, Grand Island Northwest, Grand Island Central Catholic, Adams Central, Aurora, Central City, Central Valley, Centura, Doniphan-Trumbull, Heartland Community, Home School, Loup City, Palmer, Wood River

62% of 2018 GISH Submitted Applications Were Awarded

(16% of Non-GISH Submitted Applications Were Awarded)

96 Review Volunteers in 2019

Our reviewers are divided up into review groups. Each review group is different and assigned to review specific scholarships. The GIPS Foundation has **24** unique scholarship review groups.

Independent Review:

Scholarship reviewers complete the online review of scholarships independently. It is a blind review process. Reviewers do not have access to student identifying information. After the review deadline all of the scholarship ranks from each reviewer assigned to a scholarship are combined. The combined ranking is used by the Equity Committee to select scholarship finalists.

Example: Combined Ranking

DeLeon	1	2	3	4	5	Final Ranking	1	2	3	4	5
Vikki Deuel	2395	2657	2386	2422	2447		2395	2386	2636	2560	2657
DeLeon	2514	2400	2519	2636	2653						
Michelle Anderson	2380	2395	2568	2447	2560						
Lori Christensen	2636	2395	2590	2537	2657						
Jan Sorensen	2562	2437	2653	2422	2590						
Carol Helleberg	2386	2560	2379	2425	2395						

Equity Committee Meeting: One reviewer from each review group is assigned to be the Team Leader. Each Team Leader is provided the combined scholarship rankings for their group. All Team Leaders are part of the Equity Committee. The committee selects scholarship finalists. This is a blind review process.

GRAND ISLAND PUBLIC SCHOOLS FOUNDATION

Traci Skalberg, Executive Director • 308-385-5900 • tskalberg@gips.org • www.gipsfoundation.org

Scholarship Terms:

Blind Review: Scholarship reviewers **DO NOT** have access to student identifying information.

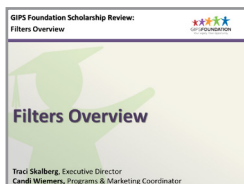
Initiative Points: Points assigned to an application determined by when a student submits before deadline. Initiative Points information is provided to students: in the application, scholarship website, online and print guideline booklet, in presentation to senior class, and in counselor progress reports.

Reviewer Lists: **Master Reviewer List** - A list of all applications that qualify for one or more scholarships assigned to your group. This is the first screen after logging in. **DO NOT** review scholarships from the master list.
Scholarship Reviewer List - A list of eligible applications for that scholarship. Review applications from this list.



Training video at: gips.org/foundation/scholarships/review.html

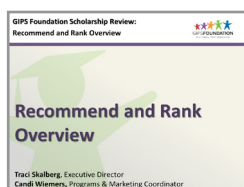
Filter: The filter is a set of rules for the scholarship database to select only applications that meet scholarship eligibility qualifications. Applications **MUST** be filtered before reviewing. Reviewers need to verify only one filter is applied at a time.



Training video at: gips.org/foundation/scholarships/review.html

Recommend: The checkbox at the bottom of the score sheet used to mark an application for further review.

Rank: After an application is recommended and reviewed, the reviewer decides if the application should be ranked. The rank is a selection between 1st Choice, 2nd Choice, 3rd Choice... Only one rank selection type may be selected per scholarship. However, one application may be ranked for more than one scholarship. All reviewer rankings are combined with other rankings from reviewers assigned to the same scholarship. The combined rankings are used to select scholarship finalists in the Equity Committee Meeting.



Training video at: gips.org/foundation/scholarships/review.html